



**DORPLEX**  
ENTRY SYSTEMS



design. build. appreciate



# About us

## The Dorplex Story:

Welcome to Dorplex, one of North America's leading designer and manufacturer of residential, steel and fiberglass doors.

We are more than elegance and style. For close to thirty years, we are about the high quality materials we use to manufacture our products. Whether it's steel or fiberglass, Dorplex is quality with pride and passion.

Your entranceway will give the outside world a sense of who you are. Feel free to let your creativity explore the endless possibilities available through Dorplex.



# Contents



Create the Entryway of Your Dreams..... 4  
 Glass and Wrought Iron Styles at a Glance .....6-7  
 Glass Collections.....8-31

## Canadian Legacy Series Glass

York.....8	Lisbon..... 20
Classic..... 10	Glacier..... 22
Royal..... 12	Kingston..... 24
Crescent..... 14	Oakhill..... 26
Elegance..... 16	Concord..... 28
Banff..... 18	

## VA Decorative Collection

Matisse..... 30	Anya..... 31
Oslo..... 30	Mica..... 31
M-Line..... 30	Kiara..... 31
Imola..... 31	

## Dorplex Door Collections

Fiberglass Doors.....32
Executive Door Collection.....36
Contemporary Collection.....38
Wrought Iron Collection..... 42

Paint & Caming Options..... 40

## Specialty Doors

Garden & Patio Doors..... 46
Internal Mini Blind Doors..... 50
Clear Lite Series..... 52
Venting Sidelites..... 53
Replacement Doors..... 54
How to Measure Your Replacement Door..... 55
Fire Rated Doors..... 56

Sizing Chart ..... 57

Components..... 58

# Create the Entryway of Your Dreams



It's as easy as **1, 2, 3, 4**

## 1 Choose your door style pattern and configuration

Entry doors come in all shapes and sizes. Whether it's a single door or a complicated system with a transom. We will make it fit beautifully.

There are many embossed designs to choose from. Feel free to pick the one that matches your particular style.



Choose from a variety of configuration options for each style.



### See our full range of the door styles

Fiberglass Door styles pgs. 32-35 • Executive Door styles pgs. 36-37  
Clear Lite Door styles pg. 52

## 2 Choose your glass design

Our glass is created by our in-house team of glass artisans. These intricate designs reflect the meticulous attention to detail that has set Dorplex apart from other manufacturers. These designs are offered in many styles to suit almost any architectural style. The designs are available with different coming and glass options to allow customers to add their unique tastes to each creation.



### See our full range of the glass styles

Canadian Legacy Glass Series pgs. 8-28  
VA Decorative Glass Collection pgs. 30-31





### 3 Choose your door material



#### Fiberglass

Engineered to last a lifetime

Get the ultimate in performance and appearance with fiberglass doors. These doors won't dent, crack, split or warp. In addition, they provide five times the insulation value of a wood door. Choose from dozens of Dorplex decorative glass styles or the simplicity of traditional paneled door. This may be the last door your home will ever need.



See our full range of the Fiberglass door styles  
See pages 32-35



#### High-Performance Steel

Durable, secure and long-lasting

We use a premium gauge steel slab that is factory pre-finished to resist rusting. The slab styles are made from pine figure jointed pressure treated prefinished wood. The wood styles have no knots. The lock block is 16 inches which will accommodate almost all hardware. The door slab is filled with a polyurethane insulation that will keep your home warm in the winter and cool in the summer.

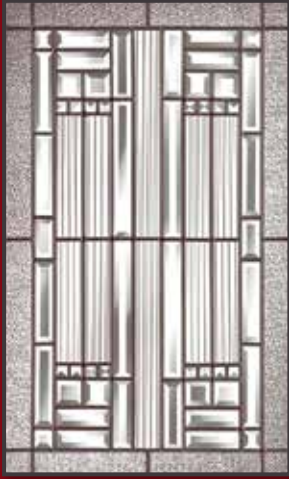


### 4 Choose your door finish

Choose from a wide variety of Stain and 39 Designer Colours.

*NOTE: Colours and textures displayed in this brochure are as true to life as can be reproduced in print. May vary from actual product.*

**CANADIAN LEGACY SERIES** *Below styles shown with Patina Caming. See page 40 for other Caming Options.*



YORK



CLASSIC



ROYAL



CRESENT



ELEGANCE



BANFF



LISBON



GLACIER



KINGSTON



OAKHILL



CONCORD

# VA DECORATIVE COLLECTION

Below styles with Caming Options as indicated.



MATISSE  
Silver Caming



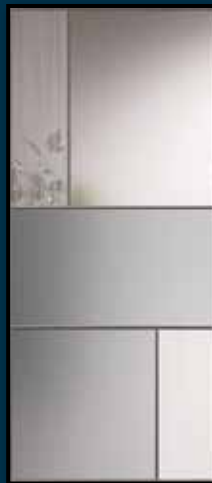
OSLO  
No Caming



M-LINE  
No Caming



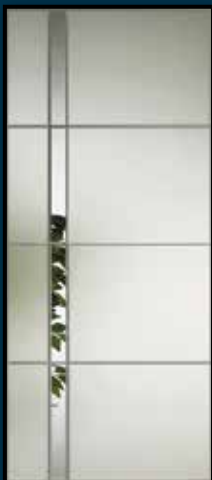
IMOLA  
Pewter Caming



ANYA  
Pewter Caming



MICA  
Black Caming



KIARA  
Stainless Caming

# WROUGHT IRON COLLECTION



BRELA



ANTONELLA



LYNDA



MEDIEVAL



EVA



SERAFINA



JULIETTA

## SANDBLAST CUT OUT

Our innovative sandblast cut out illustrates the beauty of the wrought iron design through both sides of the glass unit. Choose from either clear glass, sandblast cut out, chinchilla, cathedral, listral and molten.



Listral Glass



Cathedral Glass



Molten Glass



Chinchilla Glass

Please Note: Molten Glass will be clear and not grey as shown above.

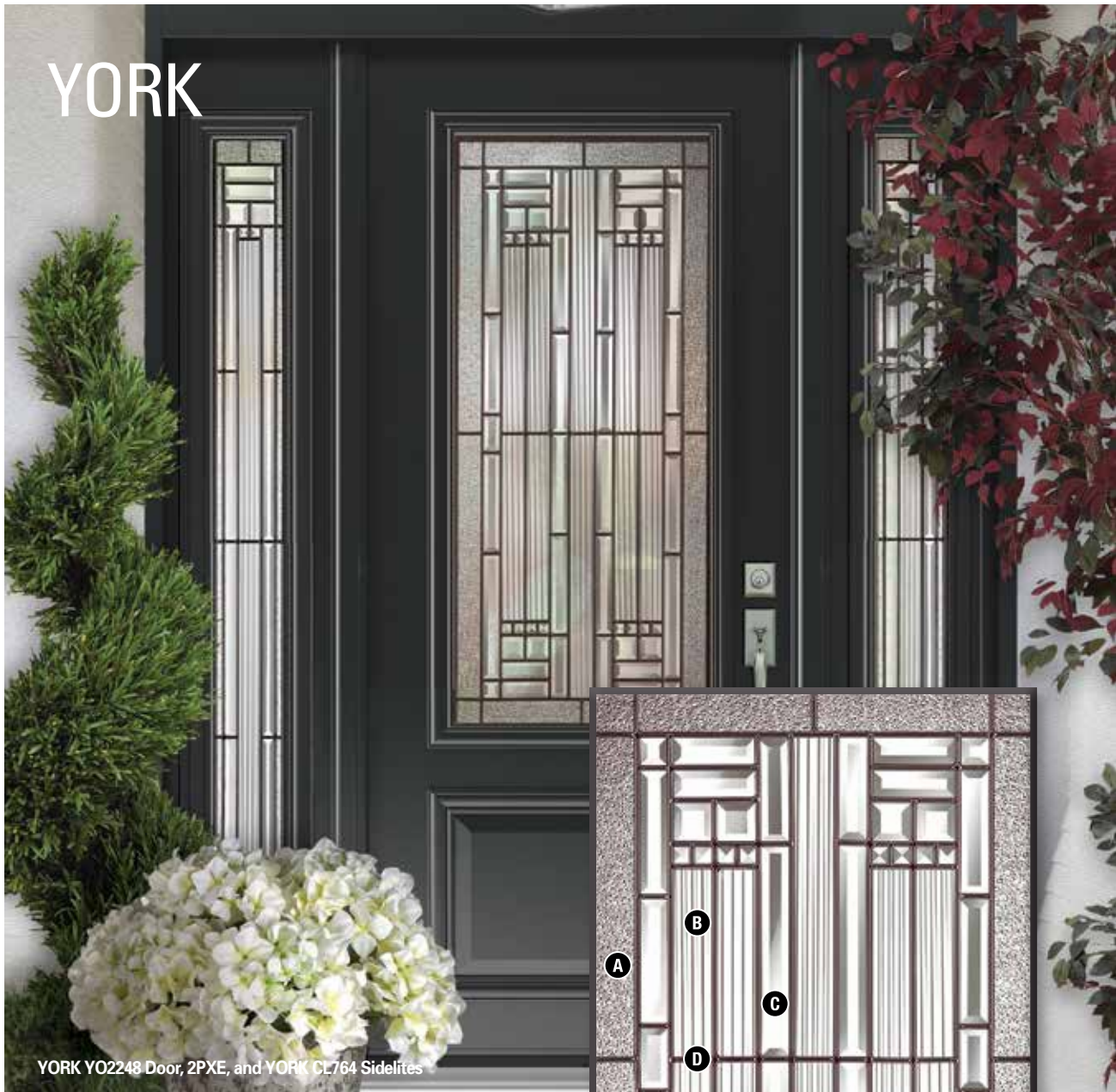
NOTE: Colours and textures displayed in this brochure are as true to life as can be reproduced in print. May vary from actual product.

# CANADIAN LEGACY SERIES

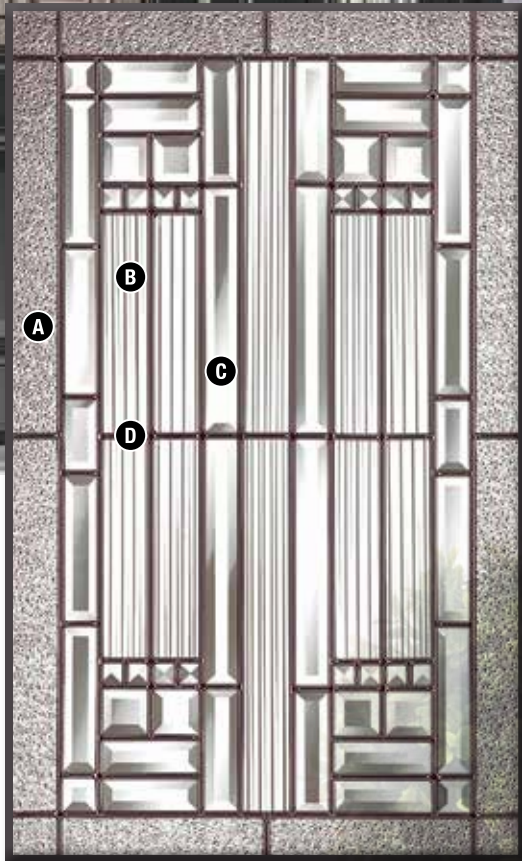
Your home will stand out from the crowd with a door from our Canadian Legacy Collection.



## YORK



YORK YO2248 Door, 2PXE, and YORK CL764 Sidelites



### YORK GLASS DETAILS

A	Sparklolute
B	Reeded
C	Clear Bevel
D	Black Chrome*

\* **Note:** See note on pg. 41

### Privacy Level



1 2 3 4 5 6 7 8 9 10



This is our signature door collection. Each system is designed and built to exacting standards. Every detail says quality, from clear glass to intricate design.

The street appeal of our decorative unit has never been more welcoming than with our Canadian Legacy collection. Let your entry system send a message to your guests that your home is a welcoming abode.

# CANADIAN LEGACY SERIES

## YORK



YO764

YO2064



YO848

YO2248

1 PANEL 3/4 LITE FIBERGLASS WG



YO2236



YO2236  
w/EXE092



YO764-LIN



YO718

### YORK — AVAILABLE SIZES

**See our full range of the door styles**

Fiberglass Door styles pgs. 32-35

Executive Door styles pgs. 36-37

Clear Lite Door styles pg. 52

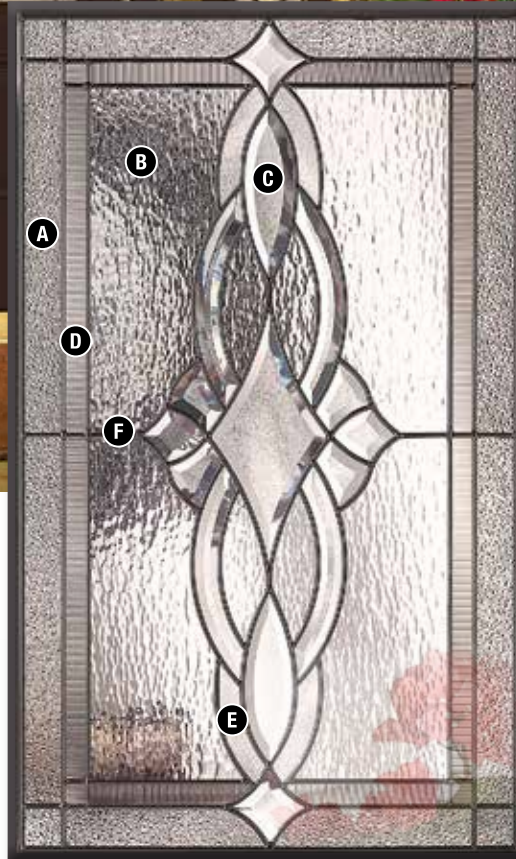


See pgs. 40-41 for Paint & Caming Options.

# CLASSIC



CLASSIC CL2248 Door, 2PXE, and CLASSIC CL764 Sidelites



CLASSIC GLASS DETAILS

- |   |                  |
|---|------------------|
| A | Sparklolite      |
| B | Hammered         |
| C | Chinchilla Bevel |
| D | Reeded           |
| E | Chinchilla       |
| F | Patina Caming    |

Privacy Level

- 1 
  2 
  3 
  4 
  5 
  6 
  7 
  8 
  9 
  10



# CLASSIC



CL764

CL2064



CL1640  
3 PANEL RICH ARCH FIBERGLASS WG



CL2064



CL2248  
w/EXE098



CL836  
w/EXE093

CL2236  
w/EXE092

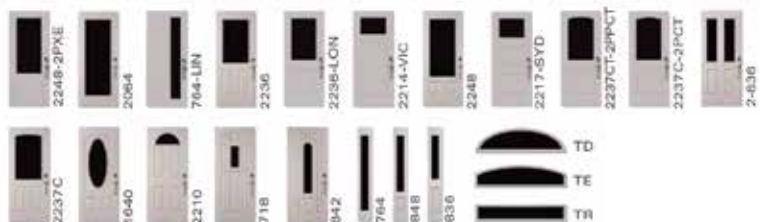


CL764-LIN

**CLASSIC — AVAILABLE SIZES**

**See our full range of the door styles**  
Fiberglass Door styles pgs. 32-35  
Executive Door styles pgs. 36-37  
Clear Lite Door styles pg. 52

See pgs. 40-41 for Paint & Caming Options.



# ROYAL

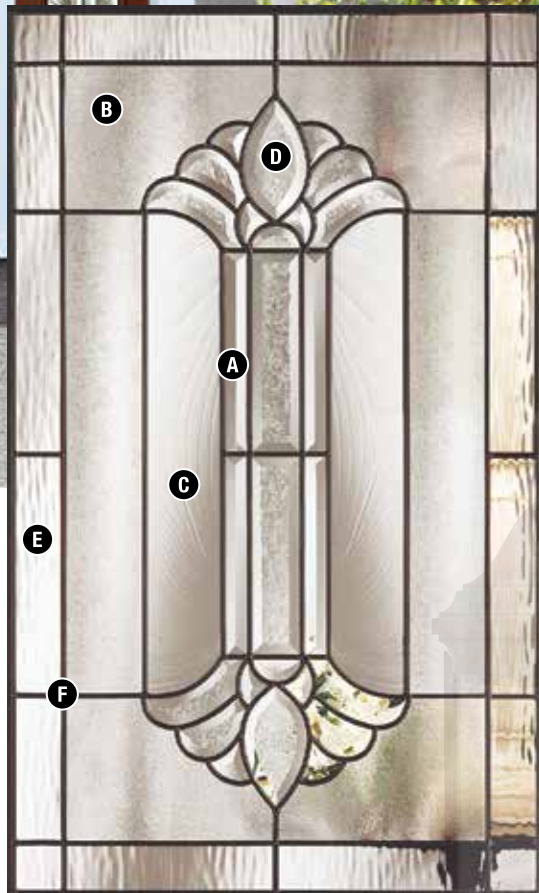


ROYAL RO2248 Door, 1 Panel 3/4 Lite Fiberglass WG, and ROYAL RO764 Sidelites

ROYAL GLASS DETAILS

- A Clear Bevel
- B Chinchilla
- C Clear Baroque
- D Double Glue Chip Bevel
- E Clear Waterglass
- F Patina Caming

Privacy Level



# ROYAL

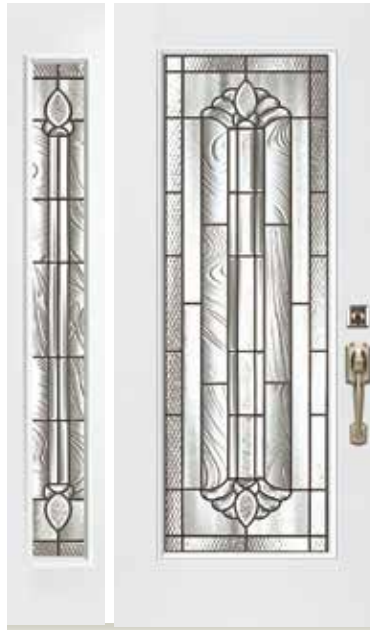


RO848

RO1640



RO2248  
1 PANEL 3/4 LITE FIBERGLASS WG



RO764

RO2064



RO2236



RO842  
PARLAIMENT FIBERGLASS WG



RO2210  
1/2 MOON



RO2236-LON



RO764-LIN

**ROYAL — AVAILABLE SIZES**

**See our full range of the door styles**  
Fiberglass Door styles pgs. 32-35  
Executive Door styles pgs. 36-37  
Clear Lite Door styles pg. 52

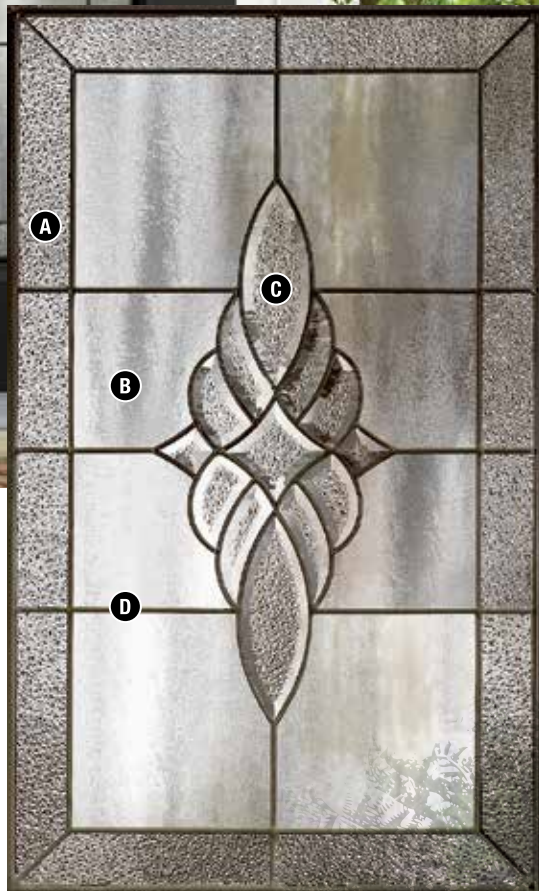
See pgs. 40-41 for Paint & Caming Options.



# CRESENT



CRESENT CR2064



CRESENT GLASS DETAILS

- |   |                   |
|---|-------------------|
| A | Sparklolite       |
| B | Chinchilla        |
| C | Sparklolite Bevel |
| D | Patina Caming     |

Privacy Level



# CRESENT



CR764

CR2064



CR2214-VIC



CR2248  
w/EXE098



CR1640



CR2248



CR764

CR2217-SYD

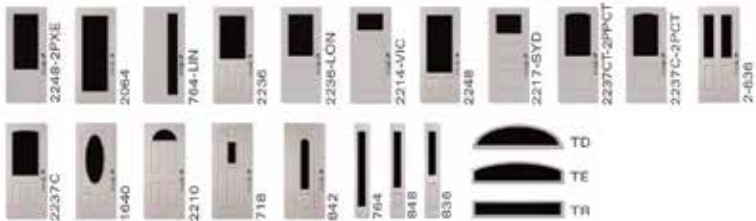


CR2236

**CRESENT — AVAILABLE SIZES**

**See our full range of the door styles**  
Fiberglass Door styles pgs. 32-35  
Executive Door styles pgs. 36-37  
Clear Lite Door styles pg. 52

See pgs. 40-41 for Paint & Caming Options.



# ELEGANCE



ELEGANCE EL2248 Door, 1 Panel 3/4 Lite Fiberglass WG

ELEGANCE GLASS DETAILS

- A      Grey Waterglass

---

- B      Hammered

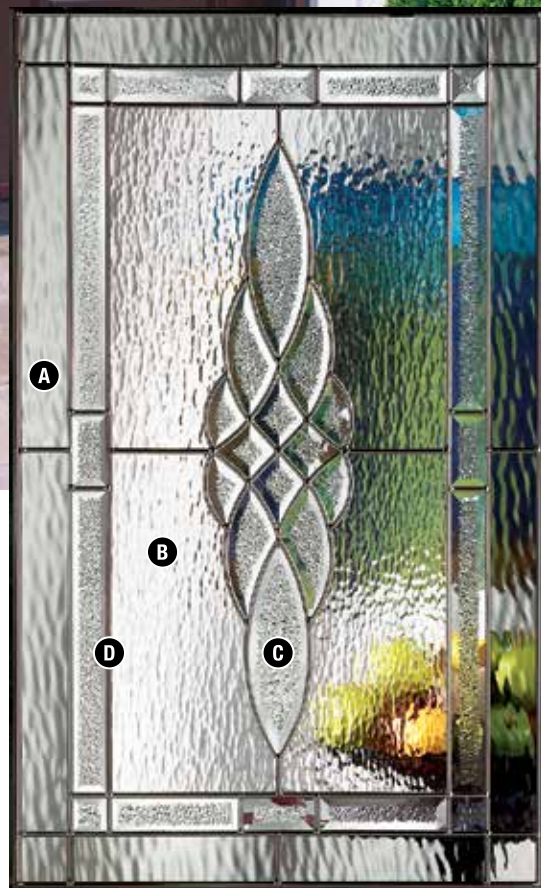
---

- C      Sparkolite Bevel

---

- D      Zinc Caming

Privacy Level





# ELEGANCE



EL836

EL2-836



EL2248  
w/2PXE STEEL PANEL



EL764

EL2064



EL2236  
w/EXE092



EL1640  
3 PANEL RICH ARCH FIBERGLASS WG



EL2214-VIC



EL2217-3L

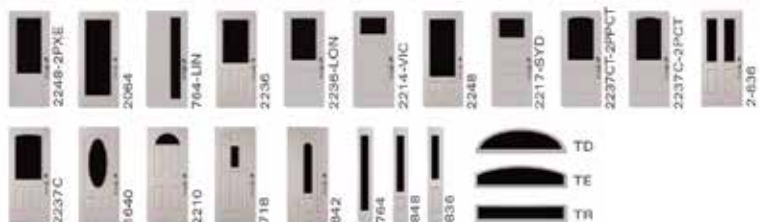


EL764-LIN

ELEGANCE — AVAILABLE SIZES

**See our full range of the door styles**  
Fiberglass Door styles pgs. 32-35  
Executive Door styles pgs. 36-37  
Clear Lite Door styles pg. 52

See pgs. 40-41 for Paint & Caming Options.



# BANFF



BANFF BA2248 Door, 2PXE, and BANFF S10 Sidelites

BANFF GLASS DETAILS

- |   |               |
|---|---------------|
| A | Clear Bevel   |
| B | Granite       |
| C | Clear Water   |
| D | Patina Caming |

Privacy Level

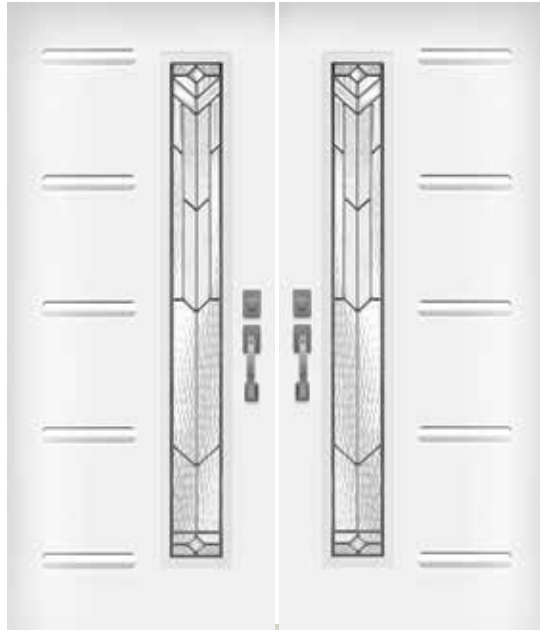


# BANFF



BA836  
W/EXE 093

BA2236  
W/EXE 092



BA764-LIN



BA764

BA2064



BA1640  
3 PANEL RICH ARCH FIBERGLASS WG



BA2248  
2PXE STEEL PANEL

BA848



BA2214-VIC



BA2217-SYD

**BANFF — AVAILABLE SIZES**

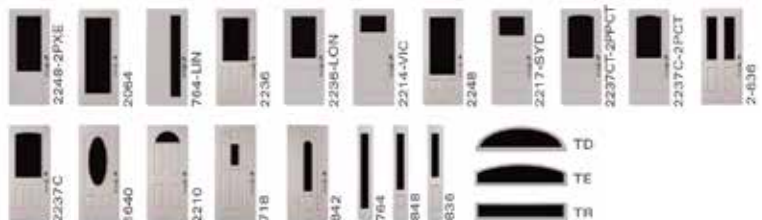
**See our full range of the door styles**

Fiberglass Door styles pgs. 32-35

Executive Door styles pgs. 36-37

Clear Lite Door styles pg. 52

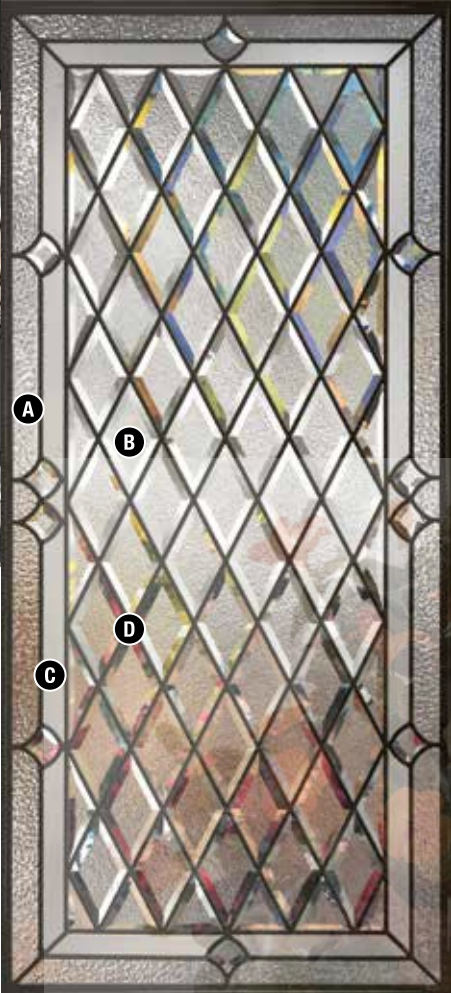
See pgs. 40-41 for Paint & Caming Options.



# LISBON



LISBON LI2217-3L Door, and LISBON LI764 Sidelites



LISBON GLASS DETAILS

- A Granite
- B Oceana Bevel
- C Listral
- D Patina Caming

Privacy Level



# LISBON



LI848

LI2248



LI764

LI2264



LI836  
W/EXE 093

LI2236  
w/EXE092



LI1640  
3 PANEL RICH ARCH FIBERGLASS WG



LI764-LIN



LI22140-VIC



LI2217-SYD

LISBON— AVAILABLE SIZES

**See our full range of the door styles**  
Fiberglass Door styles pgs. 32-35  
Executive Door styles pgs. 36-37  
Clear Lite Door styles pg. 52

See pgs. 40-41 for Paint & Caming Options.





# GLACIER

GLACIER 2264 Door

GLACIER GLASS DETAILS

- A Clear Bevel
- B Sparkolite
- C 1/8" Reed
- D Patina Caming

Privacy Level



# GLACIER



GL2264



GL764

GL2214-VIC



GL2217-SYD



GL764-LIN



GL848

GL2248

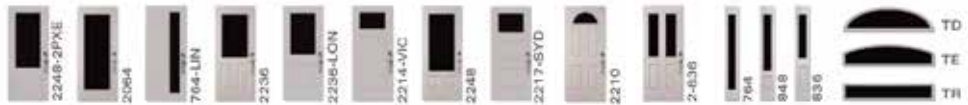


GL836  
FIBERGLASS WG

GL2-836  
6 PANEL FIBERGLASS WG

GLACIER— AVAILABLE SIZES

**See our full range of the door styles**  
 Fiberglass Door styles pgs. 32-35  
 Executive Door styles pgs. 36-37  
 Clear Lite Door styles pg. 52



See pgs. 40-41 for Paint & Caming Options.



# KINGSTON

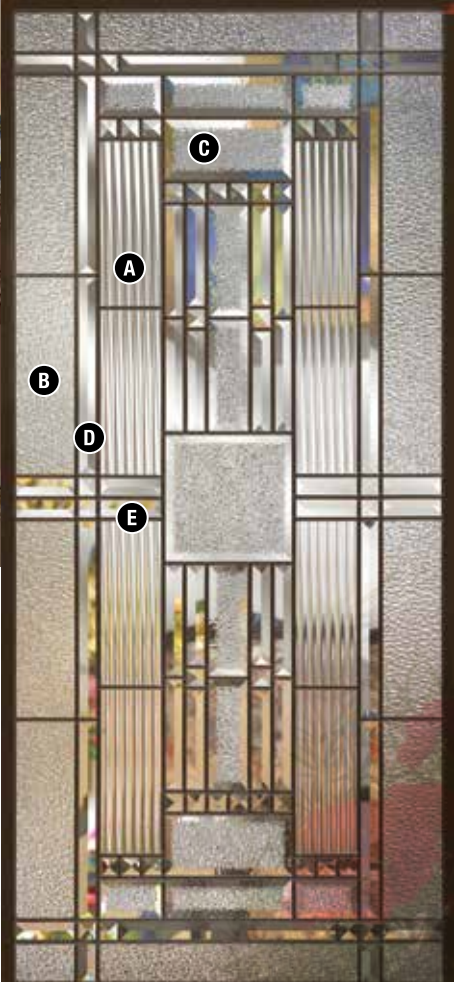
KINGSTON KI2248 w EXE098 and KINGSTON KI848 w EXE097 Sidelites

KINGSTON GLASS DETAILS	
A	1/2" Reeded
B	Grantite
C	Sparkolite Bevel
D	Clear Bevel
E	Patina Caming

Privacy Level

○ ○ ○ ○ ○ ○ ● ○ ○

1 2 3 4 5 6 7 8 9 10





# KINGSTON



KI848

KI2248



KI764

KI2264



KI2217-SYD

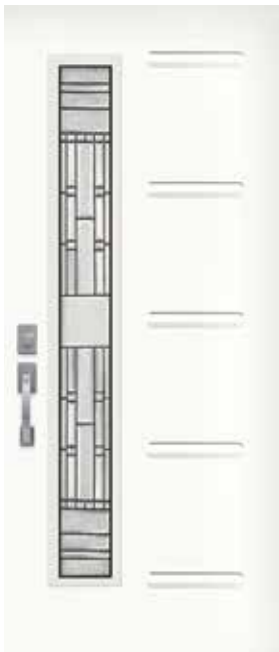


KI2236  
w/EXE092



KI836

KI2236



KI764-LIN



KI2214-VIC

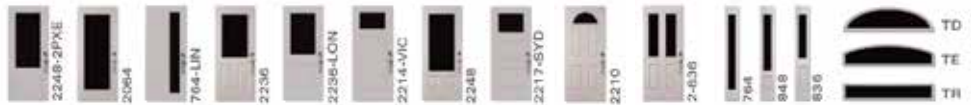
**KINGSTON— AVAILABLE SIZES**

**See our full range of the door styles**

Fiberglass Door styles pgs. 32-35

Executive Door styles pgs. 36-37

Clear Lite Door styles pg. 52



See pgs. 40-41 for Paint & Caming Options.

# OAKHILL



OAK HILL 2248 w EXE098 and OAKHILL Sidelite OH848 w EXE097

OAK HILL GLASS DETAILS

- A Sparkolite
- B Clear Bevel
- C 1/8" Reeded
- D Patina Caming

Privacy Level



# OAKHILL



OH2064

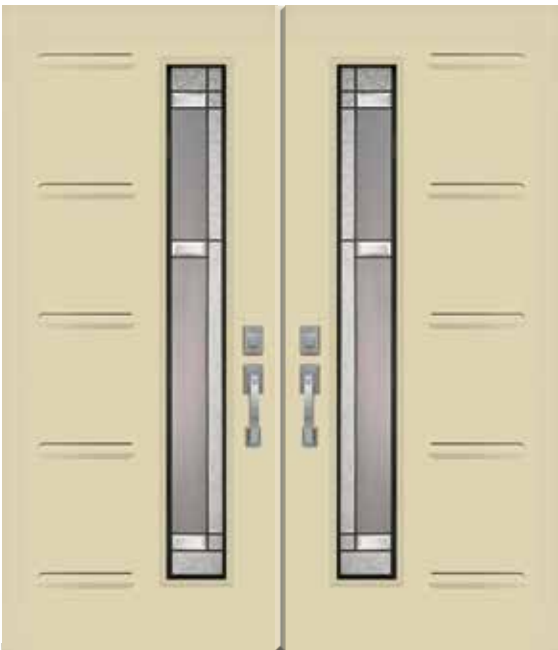


OH764

OH2214-VIC



OH2217-SYD



OH764-LIN



OH848

OH2248



OH836  
FIBERGLASS WG

OH2-836  
6 PANEL FIBERGLASS WG

OAKHILL— AVAILABLE SIZES

**See our full range of the door styles**  
Fiberglass Door styles pgs. 32-35  
Executive Door styles pgs. 36-37  
Clear Lite Door styles pg. 52

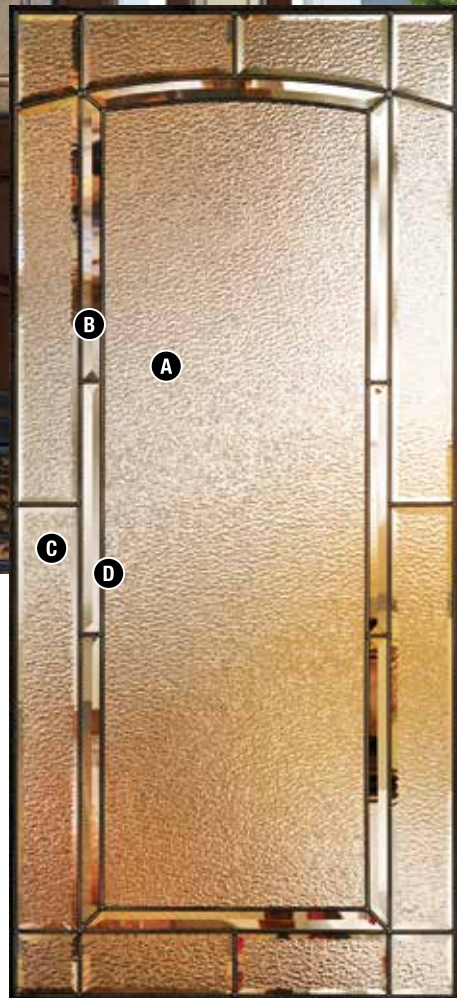


See pgs. 40-41 for Paint & Caming Options.

# CONCORD



CONCORD CO2248, 1 Panel with 3/4 Lite Fiberglass WG, and CONCORD CO764 Sidelites with CONCORD CO-TR Rectangular Transom



CONCORD GLASS DETAILS

- |   |               |
|---|---------------|
| A | Granite       |
| B | Clear Bevel   |
| C | Granite Bevel |
| D | Patina Caming |

Privacy Level



# CONCORD



CO764

CO2264

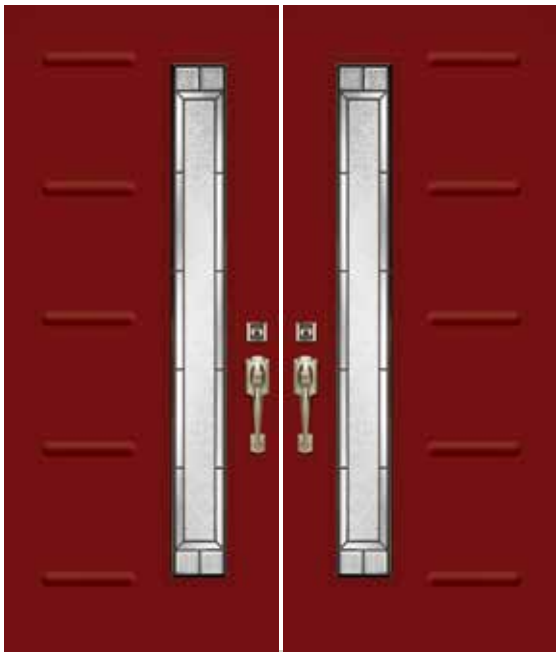


CO848  
w/EXE097

CO2248  
w/EXE098



CO2-836  
6 PANEL FIBERGLASS WG



CO764-LIN



CO2214-VIC



CO2217-SYD

**CONCORD— AVAILABLE SIZES**

**See our full range of the door styles**

Fiberglass Door styles pgs. 32-35

Executive Door styles pgs. 36-37

Clear Lite Door styles pg. 52



See pgs. 40-41 for Paint & Caming Options.



# VA DECORATIVE COLLECTION

Decorative non-welded glass designs that are sure to add style and elegance to your entryway.

The precise aluminum caming assembly eliminates the need for soldering. The result is an impeccable finish — solid and durable.

Create a distinctive door from this beautiful collection — it's as easy as 1, 2, 3, 4.

- 1** Choose a glass design.
- 2** Select your desired size from the sizes shown.
- 3** Choose your door style from our Executive, Fiberglass and Clear Lite Collections.
- 4** Choose your choice of finish.



MATISSE



MA2264

MA764

PRIVACY LEVEL **7** Silver Caming

M-LINE



M-Line S10

OS2264

PRIVACY LEVEL **8** No Caming

OSLO



OS848

OS2248

PRIVACY LEVEL **8** No Caming

Choose from our wide variety of Door Styles, Paint and Stains  
 Fiberglass Door styles pgs. 32-35 • Executive Door styles pgs. 36-37  
 Clear Lite Door styles pg 52 • Paint and Caming Options see pgs. 40-41



# VA DECORATIVE COLLECTION

## Glass Privacy Level Guide



### IMOLA



IM764

IM2248  
 1 PANEL 3/4 LITE FIBERGLASS WG  
 PRIVACY LEVEL 8 Pewter Caming

### ANYA



AN2264

AN848

AN2248

PRIVACY LEVEL 8 Pewter Caming

PRIVACY LEVEL 8 Pewter Caming

### MICA



MI764

MI764-LIN

MI848

MI2248

PRIVACY LEVEL 7 Black Caming

PRIVACY LEVEL 7 Black Caming

### KIARA



KA2264

KA764

PRIVACY LEVEL 8 Stainless Caming





# FIBERGLASS COLLECTION

## The perfect answer to the stained wood door challenge!

Get the ultimate in performance and appearance with fiberglass doors. These doors will not dent, crack or split. In addition, they provide five times the insulation value of a wood door.

See page 32 for Stain Options. See page 40 for Paint Options.



4-Panel with 1/2 Lite shown with Elegance EL2-836 Canadian Legacy Glass. See page 16

### FIBERGLASS STAIN OPTIONS

NOTE: STAINS AND TEXTURES DISPLAYED IN THIS BROCHURE ON OAK GRAIN.



GOLDEN OAK



RED OAK



DARK CHERRY



ANTIQUE MAHOGANY



DARK WALNUT



COFFEE BEAN



PROUDLY CANADIAN

NOTE: COLOURS AND TEXTURES DISPLAYED IN THIS BROCHURE ARE AS TRUE TO LIFE AS CAN BE REPRODUCED IN PRINT. MAY VARY FROM ACTUAL PRODUCT.



Stained wood appearance with fiberglass performance!



FIBERGLASS COLLECTION



**FLUSH**

OAK GRAINED  
 2'6" x 6'8"    2'8" x 8'0"  
 2'8" x 6'8"    2'10" x 8'0"  
 2'10" x 6'8"    3'0" x 8'0"  
 3'0" x 6'8"

SMOOTH  
 2'6" x 6'8"    2'8" x 8'0"  
 2'8" x 6'8"    2'10" x 8'0"  
 2'10" x 6'8"    3'0" x 8'0"  
 3'0" x 6'8"



**1-PANEL 3/4 LITE**

OAK GRAINED  
 2'8" x 6'8"    2'8" x 8'0"  
 2'10" x 6'8"    2'10" x 8'0"  
 3'0" x 6'8"    3'0" x 8'0"

SMOOTH  
 2'8" x 6'8"    3'0" x 6'8"  
 2'10" x 6'8"

MAHOGANY GRAINED  
 2'8" x 6'8"    3'0" x 6'8"  
 2'10" x 6'8"



**2PST**

OAK GRAINED  
 2'8" x 8'0"  
 2'10" x 8'0"  
 3'0" x 8'0"



*1-Panel 3/4 Lite shown with  
 Royal RO2248  
 Canadian Legacy Glass.  
 See page 12*



**3-PANEL ARCH**

OAK GRAINED    SMOOTH  
 2'8" x 6'8"    2'8" x 6'8"  
 2'10" x 6'8"    2'10" x 6'8"  
 3'0" x 6'8"    3'0" x 6'8"

MAHOGANY GRAINED  
 2'8" x 6'8"  
 2'10" x 6'8"  
 3'0" x 6'8"



**6-PANEL BLANK TOP**

OAK GRAINED    SMOOTH  
 2'8" x 6'8"    2'8" x 6'8"  
 2'10" x 6'8"    2'10" x 6'8"  
 3'0" x 6'8"    3'0" x 6'8"

Above shown with ROYAL 1/2 Moon  
 RO2210 see page 12.



**4-PANEL BLANK TOP**

OAK GRAINED    SMOOTH  
 2'8" x 6'8"    2'8" x 6'8"  
 2'10" x 6'8"    2'10" x 6'8"  
 3'0" x 6'8"    3'0" x 6'8"

Above shown with ROYAL 1/2 Moon  
 RO2210 see page 12.

Further enhance the appearance of your fiberglass door with the addition of a decorative glass from our "Canadian Legacy Series" collection.  
 See pages 8-28.

NOTE: COLOURS AND TEXTURES DISPLAYED IN THIS BROCHURE ARE AS TRUE TO LIFE AS CAN BE REPRODUCED IN PRINT. MAY VARY FROM ACTUAL PRODUCT.

Make a distinctive entrance with a high performance fiberglass door.



# DORPLEX FIBERGLASS COLLECTION

See page 32 for Stain Options. See page 40 Paint Options.



**3-PANEL RICH ARCH**

OAK GRAINED  
2'8" x 6'8"  
2'10" x 6'8"  
3'0" x 6'8"



**8-PANEL PARLIAMENT**

OAK GRAINED  
2'10" x 6'8"    2'10" x 8'0"  
3'0" x 6'8"    3'0" x 8'0"

SMOOTH  
2'10" x 6'8"  
3'0" x 6'8"



**6-PANEL**

OAK GRAINED  
2'8" x 6'8"    2'8" x 8'0"  
2'10" x 6'8"    2'10" x 8'0"  
3'0" x 6'8"    3'0" x 8'0"

SMOOTH  
2'8" x 6'8"    2'8" x 8'0"  
2'10" x 6'8"    2'10" x 8'0"  
3'0" x 6'8"    3'0" x 8'0"



**4-PANEL NEW ENGLAND**

OAK GRAINED    SMOOTH  
2'8" x 6'8"    2'8" x 6'8"  
2'10" x 6'8"    2'10" x 6'8"  
3'0" x 6'8"    3'0" x 6'8"



**2PCT**

MAHOGANY GRAINED  
3'6" x 8'0"



**2PPCT**

MAHOGANY GRAINED  
2'8" x 6'8"    3'6" x 8'0"  
2'10" x 6'8"  
3'0" x 6'8"

SMOOTH  
2'8" x 6'8"  
2'10" x 6'8"  
3'0" x 6'8"



**6-PANEL LEDGE**

OAK GRAINED  
2'10" x 6'8"  
3'0" x 6'8"



**CRF  
(w/DENTIL SHELF\*)**

MAHOGANY GRAINED  
3'0" x 6'8"

\*Dentil Shelf Sold Separately.

# Stained wood appearance with fiberglass performance!



## FIBERGLASS COLLECTION

See page 32 for Stain Options. See page 40 Paint Options.

NOTE: COLOURS AND TEXTURES DISPLAYED IN THIS BROCHURE ARE AS TRUE TO LIFE AS CAN BE REPRODUCED IN PRINT. MAY VARY FROM ACTUAL PRODUCT.

### FIBERGLASS SIDELITES



**FULL GLASS SIDELITE**  
PT764

DIMENSIONS (W X H)  
1'0" x 6'8"  
1'0" x 8'0"



**3/4 GLASS SIDELITE**  
RO848

DIMENSIONS (W X H)  
1'2" x 6'8"  
1'2" x 8'0"



**1/2 GLASS SIDELITE**  
PR836

DIMENSIONS (W X H)  
1'0" x 6'8"  
1'0" x 8'0"  
1'2" x 6'8"  
1'2" x 8'0"



**2PSL**

DIMENSIONS (W X H)  
1'0" x 6'8"  
1'2" x 6'8"



3 PANEL ARCH WG FIBERGLASS shown with CLASSIC CL1640

Make a distinctive entrance with a high performance fiberglass door.



# DORPLEX EXECUTIVE COLLECTION

When you choose a product from our Executive Panel Collection the result is a beautiful door. The executive panel is inserted into the door very much like a decorative light is inserted into a door. The result is a raised panel that gives you that rich executive look that is so sought after.

See page 40 Paint Options.



BA2236 w EXE092  
Shown with  
Banff (BA2236)  
decorative glass  
See page 18



EXE094/EXE102/EXE094



EXE090



EXE092/EXE094/EXE092



# For simplicity and class choose a beautiful steel door with a raised Executive Panel



## DORPLEX EXECUTIVE COLLECTION

Further enhance the appearance of your Executive door with the addition of a decorative glass from our "Canadian Legacy Series".  
*See pages 8-28.*

*See page 40 Paint Options.*



EXE106



EXE104/EXE098



EXE102/EXE092



YO2236 w/ EXE092  
Shown with  
York (YO2236)  
decorative glass  
See page 8





# CONTEMPORARY COLLECTION

The **Comtemporary Collection** harmonizes modern style with quality and energy efficiency. Choose from a variety of door styles and glass designs. Doors can be painted in one of 39 different designer colours.



**KRISET**  
2236 with EXE092



**LINATA**  
2064



**TRIO SUPERLINE**  
2217-SL



**QUATTRO M-LINE**  
2210-4L

**See pages 40-41 for a full range of Paint and Glass Options.**

By incorporating three or four of these glazing units into one door, you'll give your entrance a highly desirable designer look. Very fitting for modern architecture. Interchange glass types to create your own distinct look.

**M-LINE**



PRIVACY LEVEL 8

**SUPERLINE**



PRIVACY LEVEL 7



All units meet Energy Star certification.



PROUDLY CANADIAN

See pages 40-41 for a full range of Paint and Glass Options.

# DORPLEX CONTEMPORARY COLLECTION

**Glass Privacy Level Guide**

Least Obscure 1 2 3 4 5 6 7 8 9 More Obscure



**KRIZET**  
764-LIN



**LINATA**  
2248 with EXE098

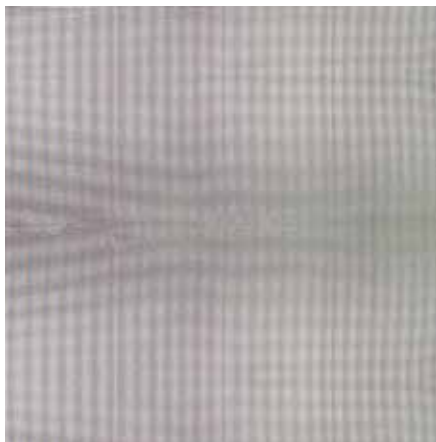


**WHITE ACID ETCHED**  
2214-VIC



**M-LINE**  
2217-SYD

**KRIZET**



PRIVACY LEVEL 9

**LINATA**



PRIVACY LEVEL 8

**WHITE ACID ETCHED**



PRIVACY LEVEL 9

# COLOUR OPTIONS

Take advantage of our expertise in factory pre-finishing and staining. Choose from one of thirty-nine designer paint colours and give your home the "wow!" factor.

NOTE: COLOURS AND TEXTURES DISPLAYED IN THIS BROCHURE ARE AS TRUE TO LIFE AS CAN BE REPRODUCED IN PRINT. MAY VARY FROM ACTUAL PRODUCT.

<b>BLACK</b> 200	<b>OCEAN BLUE</b> 273	<b>WEDGEWOOD BLUE</b> 274	<b>DOVER GREY</b> 271	<b>POLYPLEX</b> 397	<b>BRIGHT WHITE</b> 400
<b>BURGUNDY</b> 213	<b>AZTEC RED</b> 205	<b>K. SANDALWOOD</b> 291	<b>G. SANDALWOOD</b> 316	<b>ALMOND</b> 356	<b>MAIZE</b> 336
<b>COMMERCIAL BROWN</b> 223	<b>CHESTNUT BROWN</b> 220	<b>SABLE</b> 257	<b>TAUPE</b> 307	<b>PEBBLE</b> 293	<b>WICKER</b> 312
<b>EVERGREEN</b> 247	<b>FOREST GREEN</b> 240	<b>OLIVE GREEN</b> 245	<b>GREEN GREY</b> 253	<b>SLATE GREY</b> 251	<b>CANYON CLAY</b> 309
<b>IRON ORE</b> 411	<b>GRAPHITE</b> 418	<b>WINDSWEPT SMOKE</b> 415	<b>DARK DRIFT</b> 416	<b>STORM</b> 414	<b>IVORY</b> 412
<b>COSTAL BLUE</b> 413	<b>APPLE CANDY RED</b> 417	<b>ANTIQUÉ BROWN</b> 410	<b>ROYAL BROWN</b> 406	<b>EARTHTONE</b> 404	<b>TAN</b> 402
			<p><b>CUSTOM COLOUR MATCHING</b> AVAILABLE UPON REQUEST. Minimal up charge applicable.</p>		
<b>VINTAGE LINEN</b> 407	<b>ANTIQUÉ RED</b> 408	<b>MYSTIC GREY</b> 405			





# GLASS OPTIONS

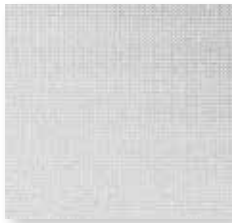
Add elegance and style to your door with the addition of our vast glass options.

## Glass Privacy Level Guide

NUMBER SIGNIFIES THE PRIVACY RATING FOR EACH GLASS TYPE



NOTE: COLOURS AND TEXTURES DISPLAYED IN THIS BROCHURE ARE AS TRUE TO LIFE AS CAN BE REPRODUCED IN PRINT. MAY VARY FROM ACTUAL PRODUCT.



LISTRAL/BUWEN  
7



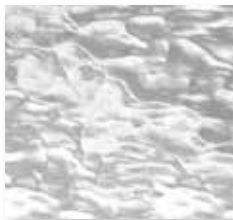
CHINCHILLA  
7



CLEAR BAROQUE  
3



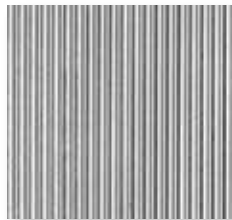
GRANITE  
8



HAMMERED  
7



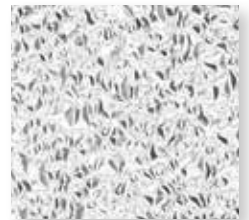
REEDED  
6



NARROW REEDED  
8



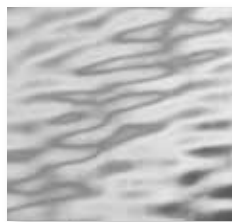
OCEANA  
7



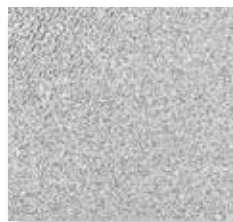
SPARKOLITE  
7



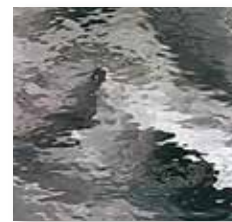
GLUE CHIP  
3



CLEAR WATER  
2



PINHEAD  
7



GREY WATERGLASS  
3

# CAMING OPTIONS



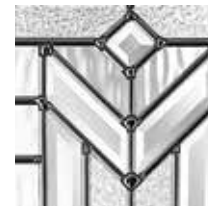
NICKEL



BRASS



PATINA



\* BLACK CHROME



ZINC



LEAD

*\* Note: The chrome element of this caming option will make the black appear lighter.*



# WROUGHT IRON COLLECTION

Our Wrought Iron Collection celebrates originality and the splendour of wrought iron. Unique to this collection is our Sandblast Cutout glass backing, reflecting both the beauty of our glass design and the strength of wrought iron. This feature showcases the brilliance of the wrought iron design through both sides of the glass insert.



Brela Wrought Iron Collection Door and Sidelites . See page 43 WI-BR2264 w/BR764



Listral Glass



Molten Glass

*Please Note: Molten Glass will be clear and not grey as shown above.*



Cathedral Glass



Chinchilla Glass

## SANDBLAST CUT OUT

Our Wrought Iron Collection offers a truly unique glass backing option on all its decorative wrought iron designs. Our innovative sandblast cut out illustrates the beauty of the wrought iron design through both sides of the glass unit.



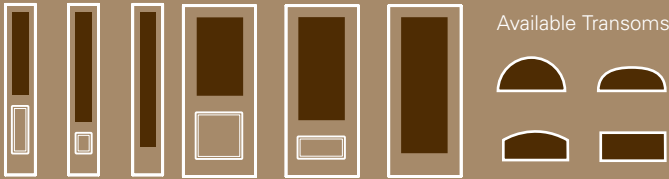
## INTERIOR GLASS OPTIONS

The craftsman wrought iron collection offers a variety of glass backing options on all its wrought iron designs. Choose from either clear glass, sandblast cut out, chinchilla, cathedral, listral and molten.

*Please Note: Interior glass is supplied by various manufactures, slight variances in texture, and opacity may result. Due to the nature that highlights are applied by hand to each piece of wrought iron, appearance may differ from piece to piece.*



WROUGHT IRON COLLECTION – Sizes Available



Available Transoms

# WROUGHT IRON COLLECTION

Choose from our wide variety of Door Styles, Paint and Stains

Fiberglass Door styles pgs. 32-35 • Executive Door styles pgs. 36-37 • Paint and Caming Options see pgs. 40-41

BRELA



WIBR2064



WIBR2248  
1 PANEL 3/4 LITE FIBERGLASS WG



WIBR848

ANTONELLA



WIAN2064



WIAN764

EVA



WIEV848



WIEV2248



WIEV848

SERAFINA



WISS6401N



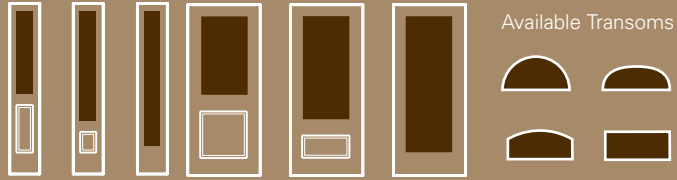
NOTE: COLOURS AND TEXTURES DISPLAYED IN THIS BROCHURE ARE AS TRUE TO LIFE AS CAN BE REPRODUCED IN PRINT. MAY VARY FROM ACTUAL PRODUCT.





MY WROUGHT IRON COLLECTION – Sizes Available

# WROUGHT IRON COLLECTION



## LYNDA



WILY848

WILY2248  
1 PANEL 3/4 LITE FIBERGLASS WG



WILY764

WILY20164

## JULIETTA



WIJL6403

## MEDIEVAL



WIMV6402

Our Wrought Iron Collection celebrates originality and the splendour of wrought iron.

## WROUGHT IRON COLLECTION



ANTONELLA Wrought Iron Collection Door and Sidelites.  
See page 43 WI-AN2264 w/AN764

**Choose from our wide variety of Door Styles, Paint and Stains**

Fiberglass Door styles pgs. 32-35 • Executive Door styles pgs. 36-37

Paint and Caming Options see pgs. 40-41



# GARDEN AND PATIO DOORS





# GARDEN AND PATIO DOORS



## SWINGING PATIO DOOR OPTIONS

Standard patio doors are built as follows: One door is fixed and the other opens inwards as viewed from the exterior. Doors can be hinged off side jambs and function as a double operator.

Three and four panel systems available. A mounted interior screen is available with the outswing systems.

## HARDWARE

Some hardware restrictions apply to 5' systems. Glass will be offset to accommodate standard drilling.

## PATIO DOOR DIMENSIONS

SIZE (WIDTH)	ACTUAL DIMENSIONS
5'0" .....	59-3/8" X 79-5/8"
6'0" .....	71-3/8" X 79-5/8"
7'6" .....	88-1/4" X 79-5/8"
9'0" .....	106-1/8" X 79-5/8"

## SWINGING PATIO DOOR OPENING OPTIONS



**Standard Garden Doors are built as follows:** One door is fixed and the other opens inwards as viewed from the EXTERIOR. The door that opens is hinged on the centre. For ordering purposes, customers need to specify their preference for the 1. Left or 2. Right opening door as seen in the sketches above.

### Other options are available:

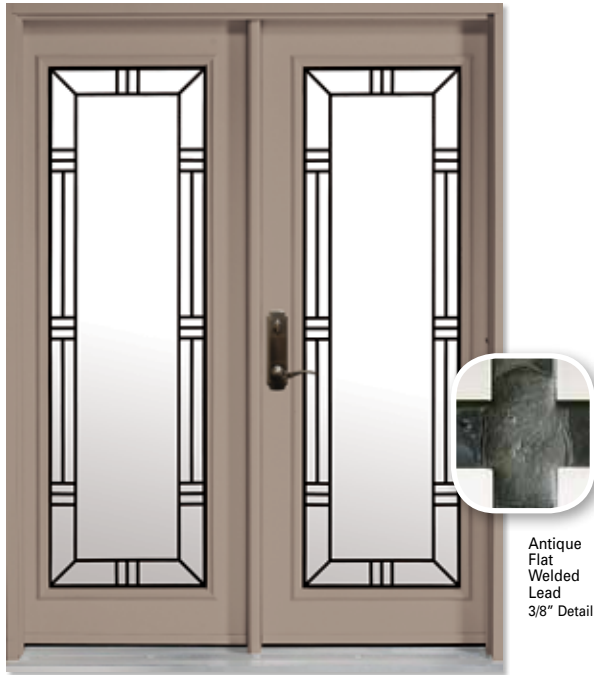
**A)** One door fixed, with 3. Left or 4. Right door opening, hinged on the side as seen in sketches above.

**B)** Both doors hinged on the sides with one door, 5. Left or 6. Right, designated as the most commonly opened door as in the sketches above.

- 3 or 4 Panel Systems are also available.
- Outswing Systems are available (note: screen will be mounted on the inside)

### SCREEN OPTIONS:

- Standard rolling screen
  - "Hide-Away" screen system is optional
- Some restrictions apply.*



**A14 IRON**  
POSITANO



**A33**  
BRASS BEVELED



**A14**  
INTERNAL IG-BLINDS R/L



**A14**  
INTERNAL GRILLS

*Patio Doors above are clear glass. See page 40 for Paint Options.*





**A-14**  
PRAIRIE GRILLS



**A159**  
PRAIRIE 2064 FULL VENT



**A-13**  
2064 SANDBLAST WITH 1" CLEAR BORDER

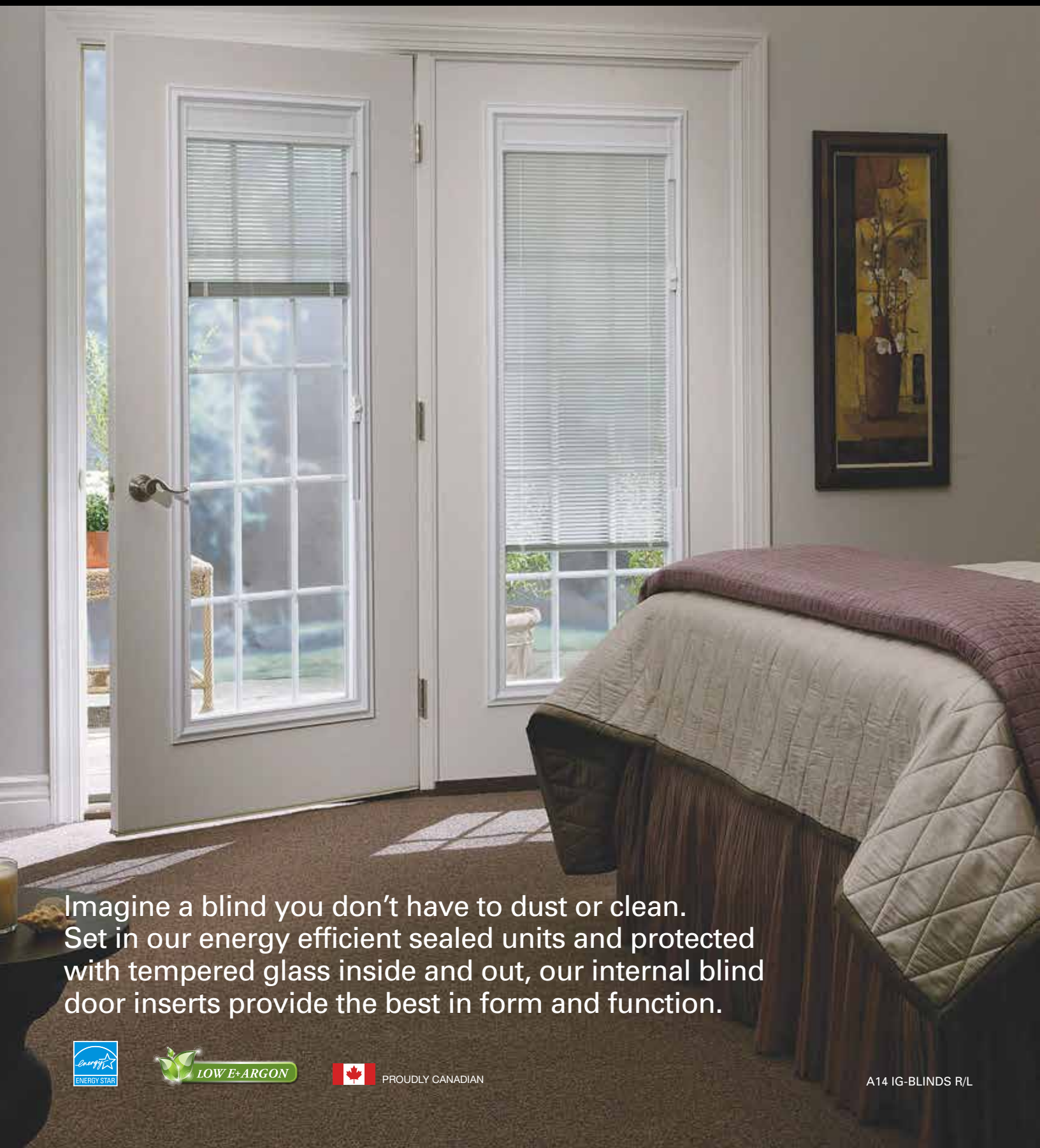


**A13B**  
RAISE/LOWER BLINDS

*Patio Doors above are clear glass.  
See page 40 for Paint Options.*

# INTERNAL MINI BLINDS

Internal Raise/Tilt Mini Blinds



Imagine a blind you don't have to dust or clean. Set in our energy efficient sealed units and protected with tempered glass inside and out, our internal blind door inserts provide the best in form and function.



A14 IG-BLINDS R/L

# Internal Raise/Tilt Mini Blinds

Privacy, comfort, and energy efficiency.

## INTERNAL MINI BLINDS



A13B  
RAISE/LOWER MINI BLINDS



S09B

Single touch adjustment opens or closes the blind giving you easy control over light and privacy. Sealed between tempered safety glass for longer life, better insulation and less maintenance.

### RAISE/LOWER INTERNAL MINI BLINDS



Single touch adjustment opens or closes the blinds. Can paint or stain lever controls. Cycle tested to ensure trouble-free operation. Includes tilt and turn option.



B06IG-B  
RAISE/LOWER MINI BLINDS



A14IG-B  
RAISE/LOWER MINI BLINDS



B02B



# CLEAR LITE SERIES

## Clear Lites • Grills • Venting



Grill configuration may not be as shown.



D14



B06



A13



D804



B02



B07



A159 CLEAR VENT



D03 VENT



B03 VENT



A14



A159 IG VENT



D159 VENT



B03 IG VENT



SYDNEY



VICTORIA



L18



VOG



OSO



LONDON



LINEA



2PPCT



2PCT



A01



M01



B01



2PXE PLUS



G911



PA CLEAR



S2



S15



S10



S09



S804



S16



S09



S422



S20

# VENTING SIDELITES



Our venting sidelites have been designed like casement windows, allowing those gentle breezes to come in without compromising security.

VENTING SIDELITES  
AND GRILL OPTIONS

## VENTING Sidelites WITH SECURE LOCKING



Diagram A1



Diagram A2



FULL VENT

3/4 VENT

1/2 VENT

Feel secure knowing that your venting sidelite is locked tight. Using sturdy TRUTH hardware gives you years of smooth, problem free operation.

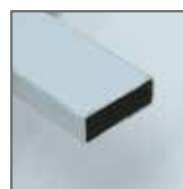
.....

**plus** Choose from a variety of grill options that best suit your decor.

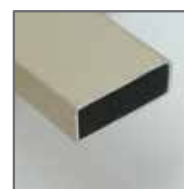
## CLEAR LITE GRILL OPTIONS



GEORGIAN GRILL



FLAT WHITE GRILL  
(STANDARD)



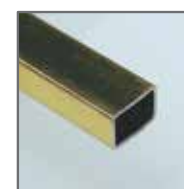
FLAT BRASS GRILL



SQAURE PEWTER  
GRILL



SQAURE WHITE  
GRILL



SQAURE BRASS  
GRILL

# REPLACEMENT DOORS

## DIY Quick & Easy to Install



*Replacement Doors are available in a wide selection of colours and sizes and can accommodate almost any glass design.*

**Simple and easy to install...**

**Just remove the old door, trim and threshold, slip in the new replacement door and secure it in place. There is no need to remove or replace the existing door jamb, saving you time and effort.**

This is especially helpful if you are replacing a door in an older home where the door jamb is especially difficult to remove.

# How to measure for your REPLACEMENT DOOR

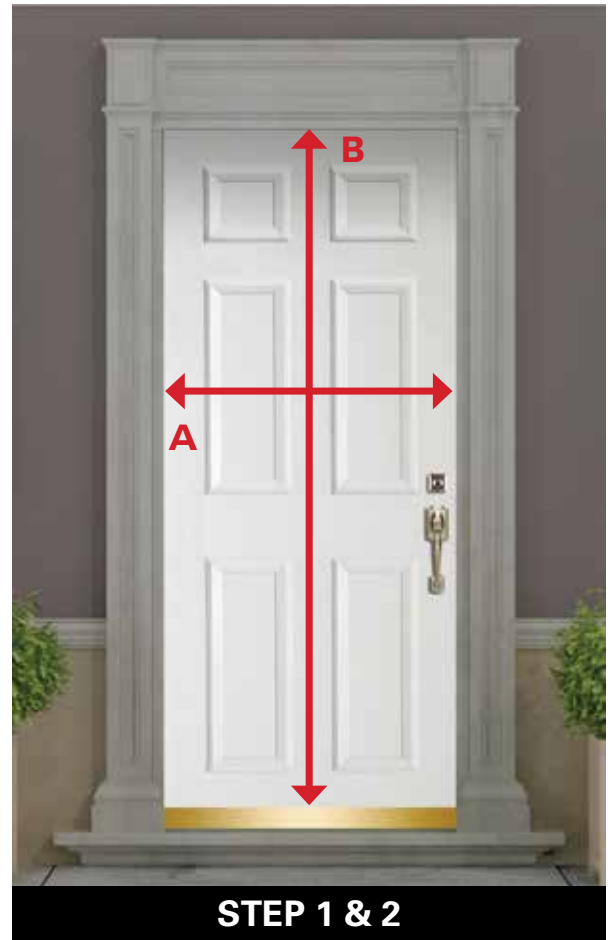
REPLACEMENT DOORS

## Follow these easy steps to ensure the best fit for your Replacement Door.

Measuring your door and determining your door handing is very important to ensure the best fit for your opening. For best results follow this easy guide.

**STEP 1.** Measure edge-to-edge from one side of the door slab to the edge of the other side of the door slab **(A)**.

**STEP 2.** Measure the top edge of the door slab to the bottom edge of the door slab. **Do not include the sweep on the bottom of the door (B).**



*Replacement Doors are available in a wide selection of colours and sizes and can accommodate almost any glass design.*

WDITH (MIN. TO MAX.)
29 1/2" x 30 1/2"
31 1/2" x 32 1/2"
33 1/2" x 34 1/2"
33 1/2" x 34 1/2"
35 1/2" x 36 1/2"
35 1/2" x 36 1/2"

HEIGHT (MIN. TO MAX.)
80" x 80 1/2"
80" x 80 1/2"
80" x 80 1/2"
82" x 82 1/2"
80" x 80 1/2"
84" x 84 1/2"

REPLACEMENT DOOR REQUIRED
30" x 80"
32" x 80"
34" x 80"
34" x 82"
36" x 80"
36" x 84"

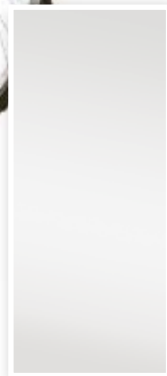


# FIRE-RATED DOORS

- Ideal for garage to home applications
- Available in a 20-minute
- 20-minute unit supplied with a pine finger jointed 1 1/2" wood frame (can be upgraded to laminated 1 1/2" frame)



B01



A01



2PXE



LONDON



M01





# DOOR SYSTEM SIZING CHART



Custom sizing is available to fit an existing wood framed opening. Sidelites can be reduced in width by up to 2 1/2", except when vented. Note sizes will vary based on frame pre finishing options selected. Height of door system: 1 1/4" frame = 81 5/8" • 1 1/2" frame = 81 7/8"

## SIZING & COMPONENTS

### FINISHED FRAME WIDTHS FOR WOOD FRAMED DOORS

FRAME	1 1/4"	1 1/2"	1 1/4"	1 1/2"	1 1/4"	1 1/2"
<b>*SINGLE DOOR WIDTHS</b>			1 SIDELITE	1 SIDELITE	2 SIDELITES	2 SIDELITES
30"	31 3/8"	31 7/8"	46 3/4"	47 3/4"	62 1/8"	63 5/8"
32"	33 3/8"	33 7/8"	48 3/4"	49 3/4"	64 1/8"	65 5/8"
34"	35 3/8"	35 7/8"	50 3/4"	51 3/4"	66 1/8"	67 5/8"
36"	37 3/8"	37 7/8"	52 3/4"	53 3/4"	68 1/8"	69 5/8"
<b>*DOUBLE DOOR WIDTHS</b>			1 SIDELITE	1 SIDELITE	2 SIDELITES	2 SIDELITES
2 x 30"	61 7/8"	62 3/8"	77 1/4"	78 1/4"	92 5/8"	94 1/8"
2 x 32"	65 7/8"	66 3/8"	81 1/4"	82 1/4"	96 5/8"	98 1/8"
2 x 34"	69 7/8"	70 3/8"	85 1/4"	86 1/4"	100 5/8"	102 1/8"
2 x 36"	73 7/8"	74 3/8"	89 1/4"	90 1/4"	104 5/8"	106 1/8"

### FINISHED FRAME WIDTHS FOR EXTERIOR STEEL CLAD, LAMINATED POLYPLEX OR COMPOSITE WOOD GRAINED - WOOD FRAMED DOORS

FRAME	1 1/4"	1 1/2"	1 1/4"	1 1/2"	1 1/4"	1 1/2"
<b>*SINGLE DOOR WIDTHS</b>			1 SIDELITE	1 SIDELITE	2 SIDELITES	2 SIDELITES
30"	31 1/2"	32	47	48	62 1/2"	64
32"	33 1/2"	34	49	50	64 1/2"	66
34"	35 1/2"	36	51	52	66 1/2"	68
36"	37 1/2"	38	53	54"	68 1/2"	70
<b>*DOUBLE DOOR WIDTHS</b>			1 SIDELITE	1 SIDELITE	2 SIDELITES	2 SIDELITES
2 x 30"	62	62 1/2"	77 1/2"	78 1/2"	93	94 1/2"
2 x 32"	66	66 1/2"	81 1/2"	82 1/2"	97	98 1/2"
2 x 34"	70	70 1/2"	85 1/2"	86 1/2"	101	102 1/2"
2 x 36"	74	74 1/2"	89 1/2"	90 1/2"	105	106 1/2"

### FINISHED FRAME WIDTHS FOR 1 1/4" INTERIOR VINYLCLAD ON WOOD FRAMED DOORS

FRAME	1 1/4"	1 1/4"	1 1/4"
<b>*SINGLE DOOR WIDTHS</b>		1 SIDELITE	2 SIDELITES
30"	31 5/8"	47 3/8"	63
32"	33 5/8"	49 3/8"	65
34"	35 5/8"	51 3/8"	67
36"	37 5/8"	53 3/8"	69
<b>*DOUBLE DOOR WIDTHS</b>		1 SIDELITE	2 SIDELITES
2 x 30"	62 1/8"	77 7/8"	93 1/2"
2 x 32"	66 1/8"	81 7/8"	97 1/2"
2 x 34"	70 1/8"	85 7/8"	101 1/2"
2 x 36"	74 1/8"	89 7/8"	105 1/2"

### SIZING NOTES

- Finished Frame Heights:  
with low 1.1" sill and 1 1/4" frame is 81 5/8"  
with low 1.1" sill and 1 1/2" frame is 81 7/8"  
with high 1.75" sill and 1 1/4" frame is 82 1/4"  
with high 1.75" sill and 1 1/2" frame is 82 1/2"
- Standard frame is 4 5/8" x 1 1/4"
- Other available size 4 5/8" x 1 1/2", 6 1/2" x 1 1/4", 6 1/2" x 1 1/2", 7 1/4" x 1 1/4"
- Standard wood & laminate brickmould extends 1" past above dimensions on top and on each side.
- For masonry opening, add to the overall frame: 2 1/4" for the sides and 1 1/4" for the top.
- Custom sizing is available:  
**Heights** - can be cut to any height, except vented sidelights. **Widths** - sidelights can be reduced in width by up to 2 1/2", except vented sidelights.



Our products meet the Energy Star program guidelines for helping individuals protect the environment through superior energy efficiency.

# DORPLEX COMPONENTS

## Every Component Counts



### 24 GAUGE STEEL SLAB

At Dorplex we use a premium 24 gauge steel slab that is factory pre-finished to resist rusting. The slab styles are made from pine finger jointed pressure treated prefinished wood. The wood styles have no knots. The lock block is 16 inches which will accommodate almost all hardware. The door slab is filled with a polyurethane insulation that will keep your home warm in the winter and cool in the summer. We offer a huge variety of door lights that will compliment every taste and style. Our door lite cutting machine accurately cuts the door light opening to ensure the glass fits perfectly into the opening.



### PINE FINGER JOINTED DOOR FRAME

Your quality door system begins with the best quality wood available. We only use pine finger jointed wood with no knots. Our wood is all Canadian home grown lumber.

### LAMINATED VINYL CLADDING

The industry has been using vinyl cladding for years. At Dorplex we have developed a laminated vinyl cladding systems that is glued to the wood substrate. This product is a far superior product. It will not buckle or warp under intense heat which is a major concern with your typical vinyl cladding. The wrap is also applied to the inside of the jamb allowing the customer to have a finished system that does not require painting after the install. Our jamb preparation is all done by automated machinery to ensure a precise cut.



VINYL CLAD



LAMINATED VINYL

Our hinge routing machines are calibrated daily to guarantee the correct hinge location of the jamb.

All jamb material is tested on our bow tester. This machine uses laser technology to determine the bow in a given piece of wood. If the bow exceeds tolerance levels the jamb material is not used in production.



### BALL BEARING HINGES AND HINGE BOLTS

The hinge is the only hardware that fastens the door to its post. At Dorplex we use premium ball bearing hinges to allow the door to move more freely through the entranceway. The hinge is fastened to the post using a thick 8 gauge hinge reinforcement plate. This prevents the door from un-squaring itself away from the post. We also offer decorative hinges that will enhance the interior of your entranceway.

### STEEL GUARDIAN PLATE

All our systems come with an 8 gauge steel guardian plate that is fastened to the outside of the door frame. The hardware latch and strike plate are fastened to this plate to reinforce the lock block section of the door. This provides added peace of mind and reduces the occurrence of break-ins.



### BRICKMOLD

Our brickmold is very aesthetically pleasing and comes in 1 5/8" and 2 1/8" to meet your measurement requirements.



### SILL OPTIONS

There are sill options to meet your desired application. Our sills come with a thick aluminum extrusion and a wood sub-sill. This strong sill gives your door system the base strength required to support the door and glass components. Black anodized sills and wheel chair accessible sills are also available. The sill is a one piece sill that is cut to measure. We have different thermal break options. These range from a pour and bridge thermal break to a vinyl cap application. Our outswing systems are built with a special outswing sill that prevents moisture from entering the home.



### DURABLE DOOR SWEEP

The door sweep sits at the bottom of the door and lines up with the sill. Our durable door sweep is made with 10 fins to stop cold, wind and rain from entering your home. The sweep has a vinyl cap on the inside to hide the unsightly screws used to fasten the sweep to the door. We use mohair fins which do not freeze or tear.

### DOOR LIGHT FRAME

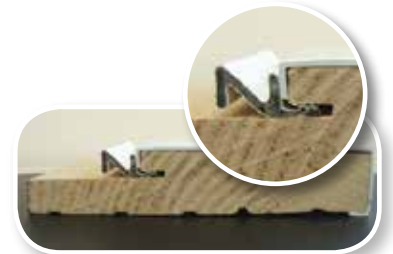
The door light frame will hold the decorative light in place in your door system. Our frame is made of a strong foam PVC material that resists warping. It is made of a non-yellowing material and comes with a screw cap cover to hide the fastening screws. The frame is sealed with three co-extruded seals that do not require sealant which tends to ooze out when heated.



*Screw cap cover excluded on round shapes and clear lites.*

### WEATHER STRIPPING

The weather stripping is inserted into the door post to prevent air infiltration. At Dorplex we use a premium Z-Mag weather stripping system that embraces both magnetic and compression technology for a far superior seal. We also offer compression weather stripping. These are both available in white and black.



### PAINTED DOORS

We offer 39 paint colours to choose from. Our paint is a premium paint that contains a heat reflective pigment that will reduce the surface temperature of the door. Our paint is applied using techniques perfected by the automotive industry. We use robots to apply an exclusively formulated primer. Another robot then applies one of the 39 Dorplex colours. The automated process guarantees a consistent quality finish that carries a five year warranty against fading or blistering. If you choose to have your door painted we will provide you with a touch up bottle to repair minor scratches.

### STAINING

We provide customers with 6 stain colour options. The stain process is highly intricate. It is all done by hand in our staining facility. The end result is a beautiful stain that will match any wood door finish. When you choose a factory stained fiberglass door you will get a door that looks like wood at a fraction of the wood door price. Get the ultimate in performance and appearance with fiberglass doors. These doors won't dent, crack, split or warp. The rails and styles which surround the entire circumference of these doors are four inches of strong laminated veneer lumber. Your door is reinforced from top to bottom. Just like a wood door.





design. build. appreciate

design and build your system with the click of a mouse.

[www.dorplex.com/door\\_designer](http://www.dorplex.com/door_designer)